



The Connecting Our Future Programme in the Netherlands:

Developing and Evaluating an Integrated Early Outreach Approach

Dr. Janna Michael, Dr. Nicolette van Halem, Dr.
Anne I. Wijtzes, Marianne den Hertog, Rowan
Huigen, Prof. Rutger Engels, & Prof. Semiha Denктаş



Overview

The Dutch educational system

Developing Connecting our Future

Early Outreach

Evaluation plans



Unequal Educational Opportunities (in NL)

What are the contributing factors?

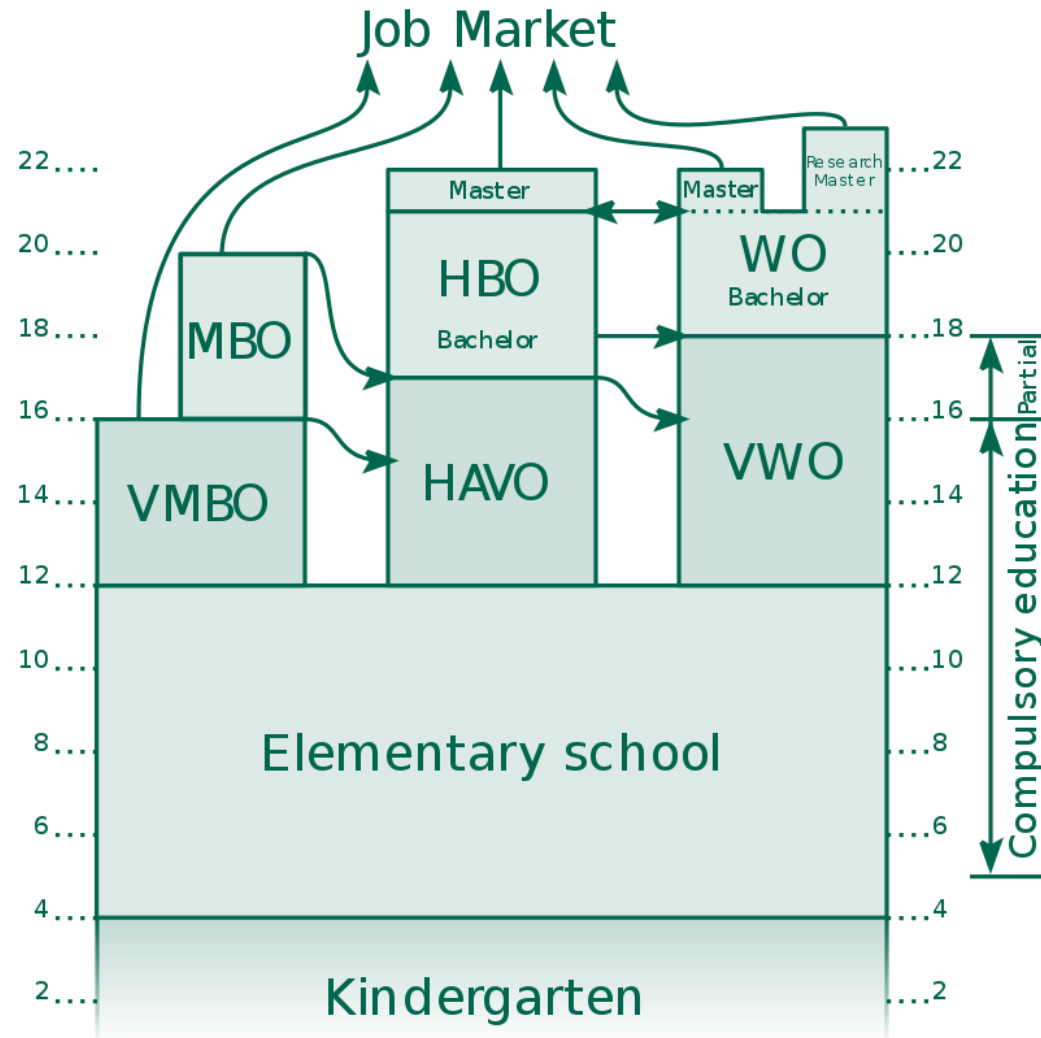
- Society level factors: e.g., inequality in society, Dutch educational system
- Neighbourhood level factors: e.g., sociocultural factors, social support
- School level factors: e.g., inclusive education, quality of education
- Family level factors: e.g., social capital, parental involvement
- Individual level factors: e.g., self-efficacy, health

Source: Badou & Day (2021)

Ezafun



The Dutch Educational Context



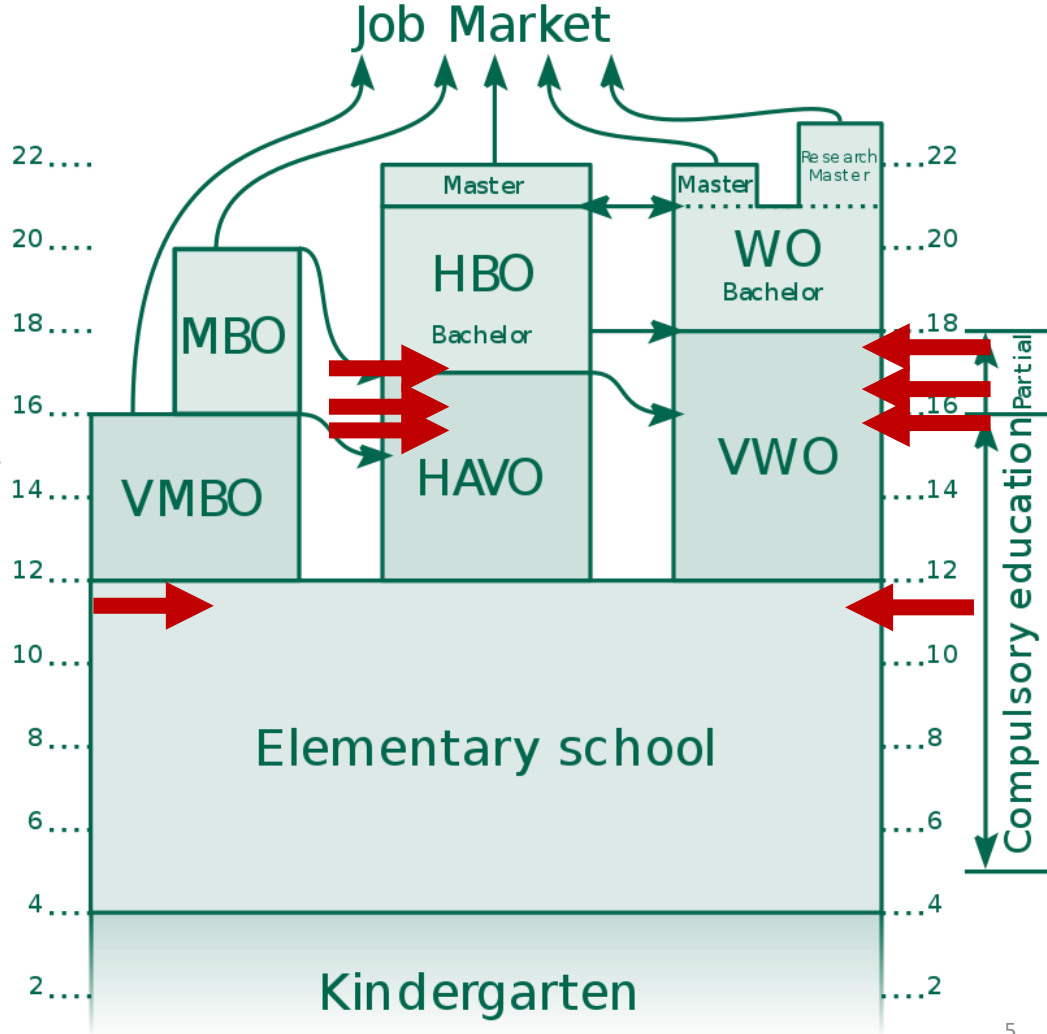
Key moments

- **Elementary school:**

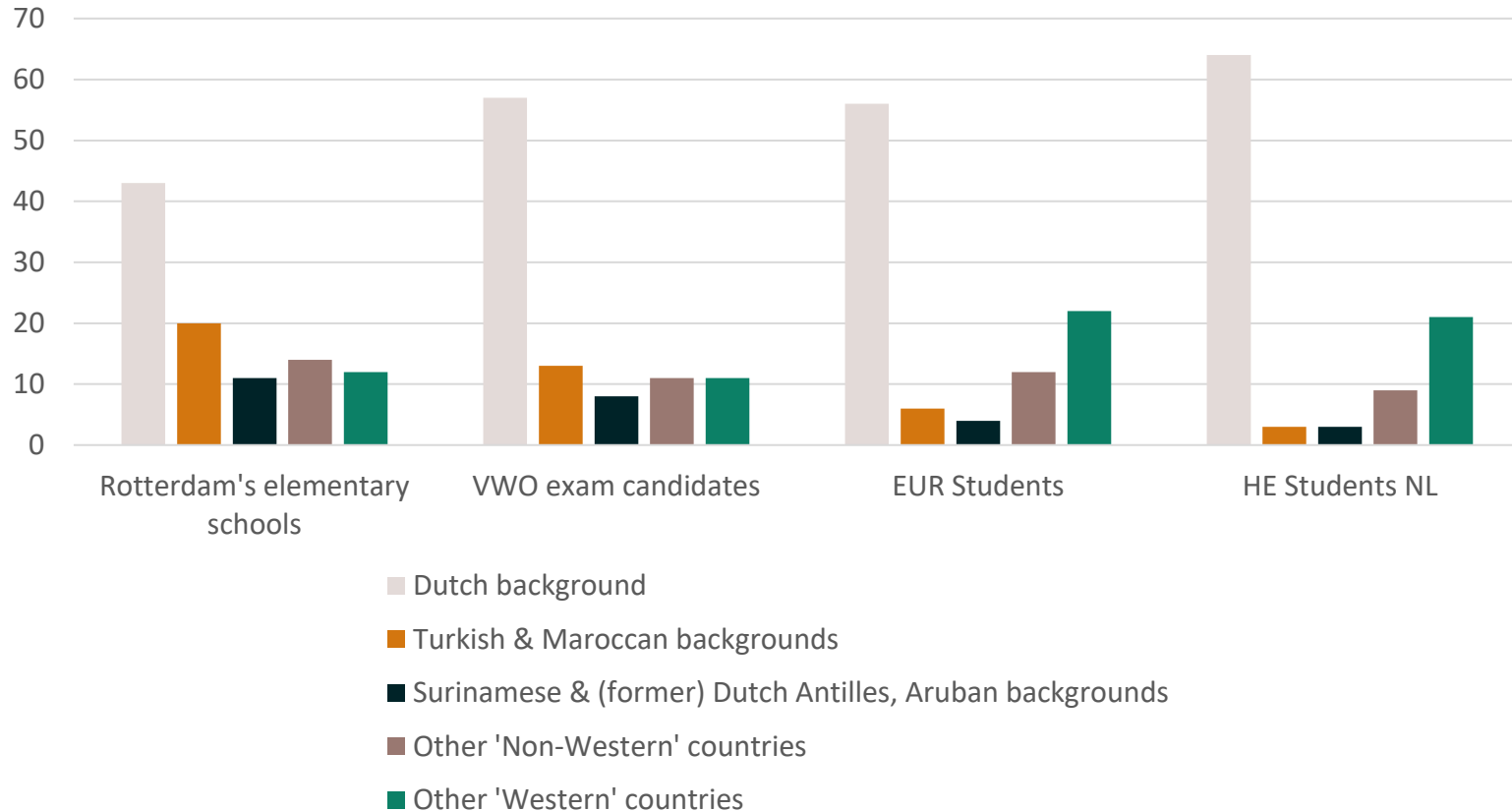
- Teacher's advice
- Centralized Cito test
- Choosing the 'right' secondary school

- **HAVO & VWO:**

- Profile choice
- Research based profile project
- Choosing what to do next



Educational Inequality based on Ethnicity 2018-2019



The Academic Outreach Programme Connecting Our Future



Connecting our Future



Early Outreach

Building capital & promoting talent development for school children, connecting with parents & city



Student-Centered

Expand & improve support for Erasmus University Rotterdam(EUR) students



Building New Blocks

Financial support for outreach projects from the EUR community (students & staff)

Early Outreach aims to...

... strengthen our relationship with young people in our city with a series of initiatives that will connect schools, researchers, policymakers, and students and increase access and promote inclusive knowledge creation.



Foundations

In close collaboration with schools & building on the lessons learned in the USA and UK, we are designing a programme which is:

- Attuned to **key transition moments** in the student journey;
- Starts at a **young age**;
- Consists of multiple, **consecutive equity-based educational programmes** throughout the student journey;
- **Removing barriers** on the way to university
- **Building capitals**

11/28/2022

Erasmus University Rotterdam



Building an Academic Support Line



In partnership with primary and secondary schools outreach interventions are being developed



The consecutive outreach interventions target students, parents, educators & school management



Comprehensive programme along the student journey from elementary school to secondary education



The educational programmes are designed in co-creation with the selected partner schools (teachers and leaders), parents, children and input of our EUR students & academic staff.

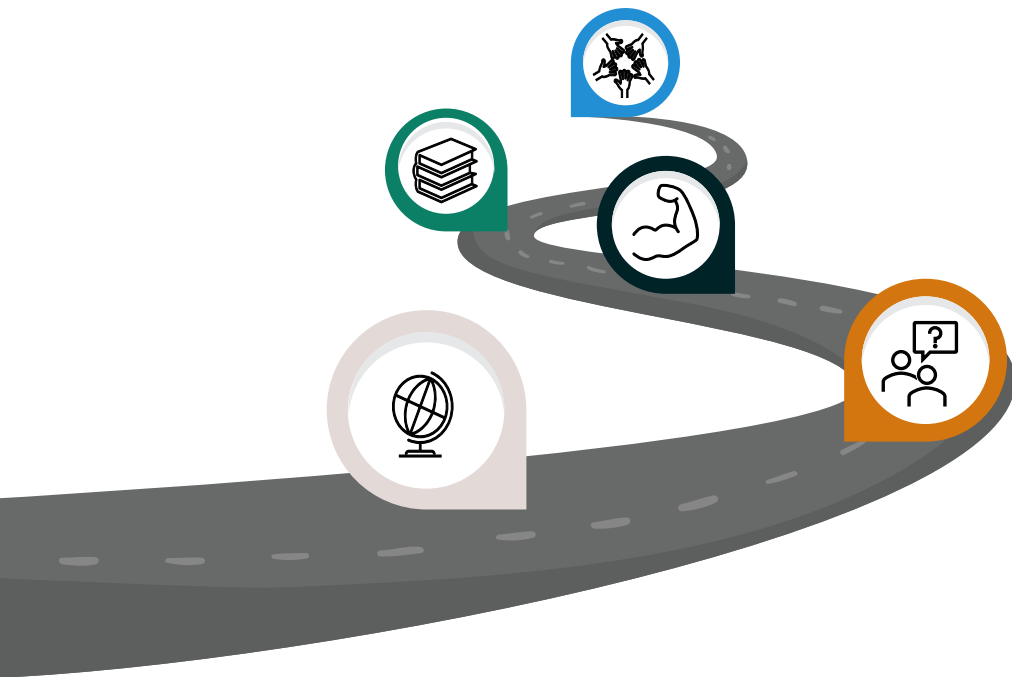


Collaboration with the EUR Science Hub, a team of educational experts, societal partners, and Rotterdam municipality

Partner schools



Overview elementary school programmes



Grade 6

Skills of the Future: TBD

Research Programme: Kids College: Cognition

Grade 7

Skills of the Future: Self-efficacy programme

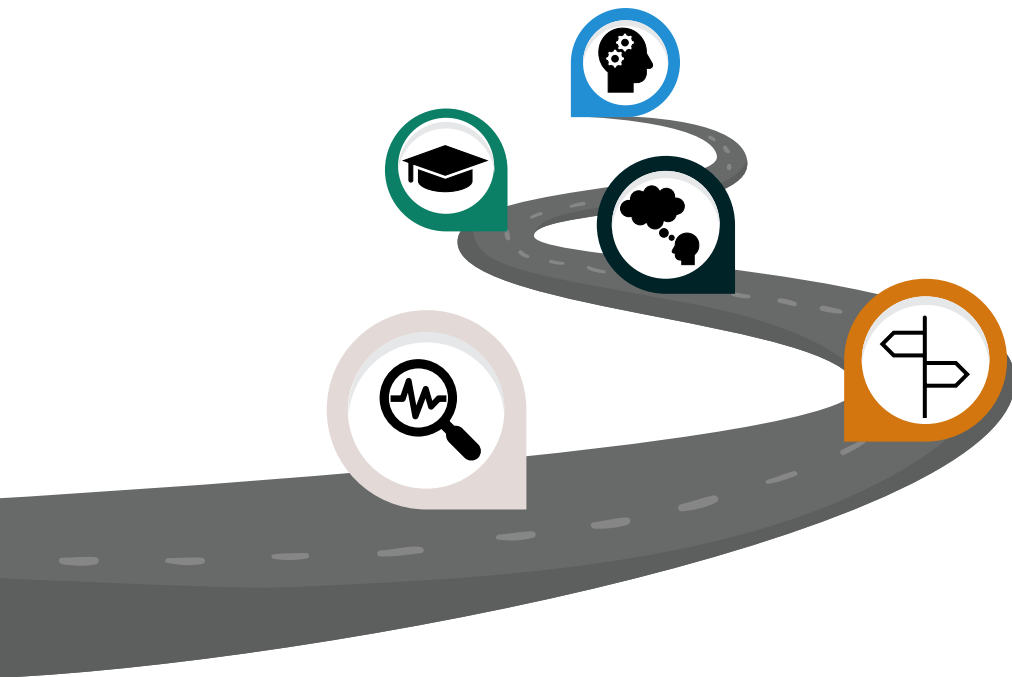
Research Programme: Kids College Nudging

Grade 8

Skills of the Future: Learning Strategies

Research Programme: Kids College (TBD)

Overview secondary school programmes



Havo/VWO 3

Profile Choice Programme

Havo 4/ VWO 4

Research Programme: Pre-PWS programme

Havo 4/VWO 5

Study Choice Programme

Havo 4/5/VWO 6

Research Programme: PWS Workshops

EUR EO Programmes in relation to the Nerupi Framework

SOCIAL AND ACADEMIC CAPITAL		HABITUS	SKILLS CAPITAL	INTELLECTUAL & SUBJECT CAPITAL
PROGRESSION CURRICULUM		STUDENT IDENTITIES	SKILLS CURRICULUM	KNOWLEDGE CURRICULUM
KNOW	CHOOSE	BECOME		UNDERSTAND
Develop students' knowledge and awareness of the benefits of education	Develop students' capacity to make choices <div>Profile Choice Programme</div> <div>Study Choice Programme</div>	Develop students' confidence and resilience to negotiate the challenges of <div>Self-efficacy programme</div>	Develop students' capacity for <div>Research Programme: Kids Colleges</div> <div>Learning Strategies</div> <div>Research Programme: PWS</div> <div>Research Programme: Pre-PWS programme</div>	Develop students' understanding by contextualising subject knowledge <div></div>

Visualization from: Hayton 6 June 2022

Research:

What are the working mechanisms of the outreach programme and how do they impact different stakeholders?



Ezafing

Evaluation

- For project evaluation purposes: we **monitor** attendance, nr of programmes running etc.
- **Process & outcome evaluation**: Qualitative & quantitative research:
 - Post questionnaires to assess implementation and outcomes (perceived effects per programme) & interviews
- **Impact evaluation**:
 - Comparing matched partner schools with non-partner schools on school performance and monitoring of new registrations at EUR
 - Assessing long term changes within the partner schools

Terminology following Hayton, 6 June 2022

The Erasmus logo, featuring the word "Erasmus" in a stylized, cursive script.

Discussion

What can we learn from each other?



Janna.michael@eur.nl

Thank you!

[Read more on
our website](#)

