

A photograph of three diverse students (two men and one woman) sitting outdoors at a table, looking at a laptop. The student on the left is a young man with short brown hair wearing an orange t-shirt. The student in the middle is a young woman with long, curly dark hair wearing a light-colored top and a gold necklace. The student on the right is a young man with short, curly dark hair wearing a green jacket over a yellow t-shirt. They are all looking at a laptop on the table. The background shows a paved area and some outdoor furniture.

Sheffield Hallam University EDI and the Curriculum

Dr Helen Kay - Academic Development & Diversity

#DecolHallam Project

Four Strands:

- Diversifying reading lists pilot
- Understanding Belonging (Racially Minoritised Students) & International students' transition experience – Focus groups.
- Inclusivity and Accessibility of teaching & learning materials on the VLE (Blackboard).
- Culturally sensitive curriculum scales questionnaire.



SHU's Inclusive Curriculum Principles

Our curriculum is inclusive and accessible to all our students.

Our diverse student body can see themselves reflected in the curriculum.

Our curriculum equips students to engage with diverse local, national and global communities.

Our curriculum provides opportunities for students to collaboratively explore, share and challenge issues of inequality.



How will we use the Inclusive Curriculum Principles?

Sheffield Hallam is undergoing a Portfolio Redevelopment and is implementing new Curriculum Structures.

All courses are being reviewed and will need to consider the Inclusive Curriculum Principles during the design phase and respond to a series of Inclusive Prompts during validation. Courses have to articulate their approach to EDI in the course documentation and map the IC Principles across all modules and levels.



CSCS Questionnaire and Portfolio Redevelopment

- Two departments are looking to deploy CSCS for current provision to create a benchmark.
- This will be student lead: one department is using its 'new' Inclusive Curriculum Consultants.
- Considering this as a paper-based exercise.

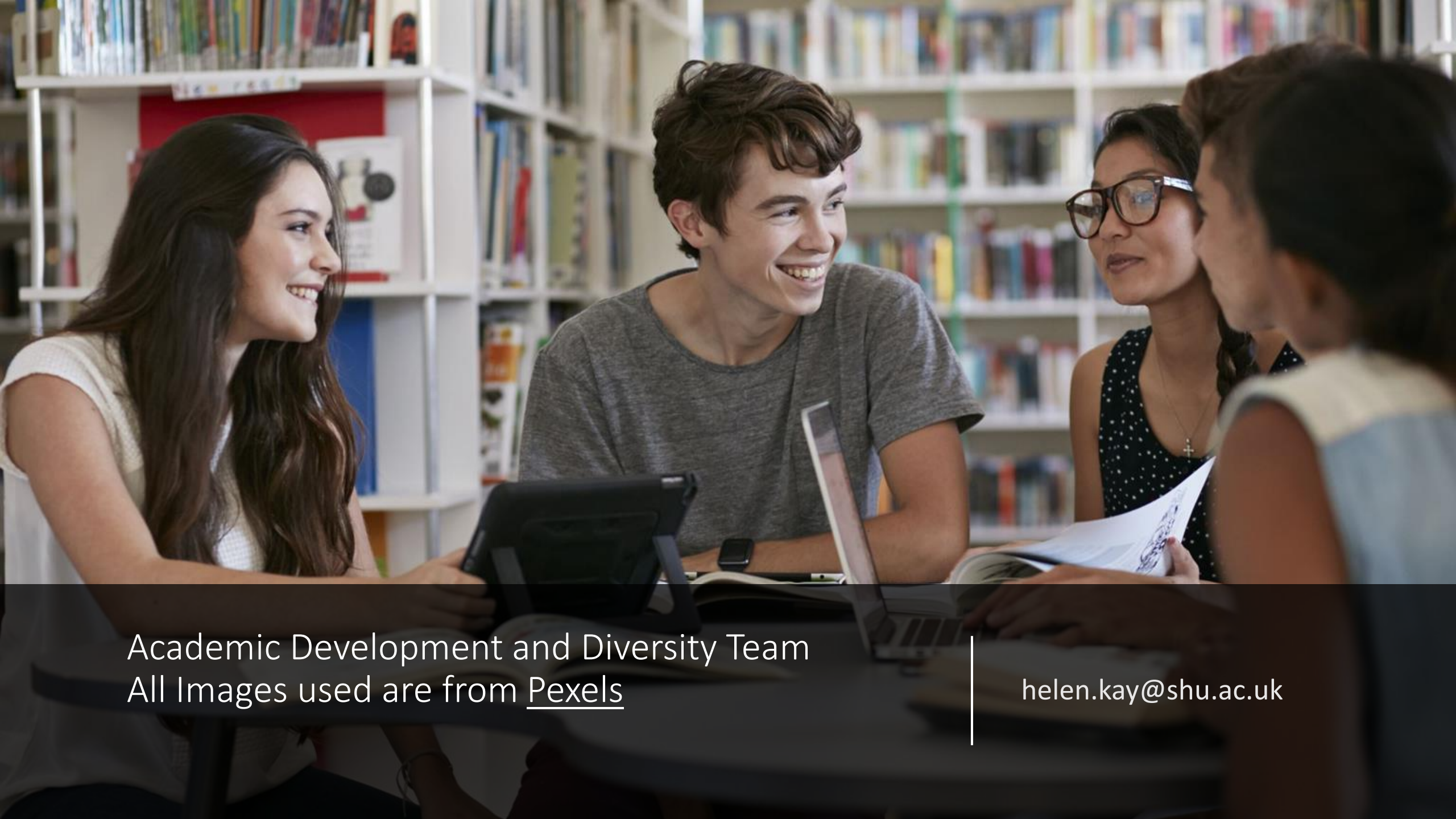


Equity Accomplice Programme

Series of six workshops (2-1.5 hours) with
Department Leadership Teams.

- Introduction & Developing our Racial Literacy
- Language and Terminology
- Power and Structural Advantage
- Noticing and Eradicating Micro-aggressions
- Exploring you Vision
- Reflecting and Translation – Developing the Share Vision





Academic Development and Diversity Team
All Images used are from Pexels

helen.kay@shu.ac.uk