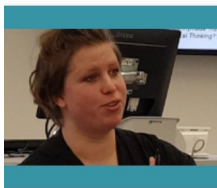


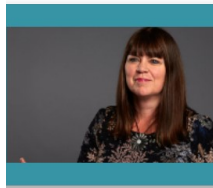
In this newsletter



[OfS Briefing for Members
Page 1](#)



[Upcoming Events
Page 2](#)

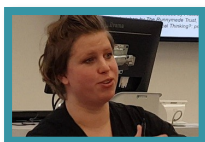


[MBE for Jacqueline
Stevenson
Page 1](#)



[NERUPI Network - What
Next?
Page 2](#)

Office for Students Briefing for NERUPI Members



*Galvanising and
sharing expertise is
so important*

Dr Alex Wardrop,
Office for Students

We were delighted to have Dr Alex Wardrop (OfS Evidence and Effective Practice Manager) brief members at a well-attended event at our Pall Mall centre in January. Alex talked through the new regulatory guidance for Access and Participation, focusing especially on evaluation requirements. Her presentation was followed by a very useful Q&A with the conversation continuing over lunch. Alex appreciated being able to hear people's thoughts, fears and questions and promised to feed these back to the OfS team. She was clear that OfS "will definitely keep working with you [NERUPI]", adding that, "galvanising and sharing expertise is so important".

Annette Hayton introduced the afternoon's practical workshops by looking at moving from a linear theory of change model towards an action research spiral model which better captures evaluation in practice.

NERUPI members can see the presentations and more in [Past Events](#) on the website.

Honours for NERUPI Academic Advisory Board



Professor Jacquelin-
ine Stevenson MBE

Chair of NERUPI
Academic
Advisory Board

We were delighted to hear that Professor Jacqueline Stevenson, Chair of the NERUPI Academic Advisory Board, received an MBE in the New Year's Honours List for her services to higher education. This was a very well deserved honour as Jacqueline has been a real champion of widening participation over many years as a practitioner, researcher and campaigner.

We were also thrilled to hear that Nicola Ingram, another Board Member, has been given a chair and is now Professor of Sociology of Education at Sheffield Hallam University.

Congratulations to both Jacqueline and Nicola!

The NERUPI Academic Advisory Board provides advice and support to the Network and is made up of academics with an interest in widening participation. See the [website](#) for current Board members and links to their research interests and publications.

Upcoming Events



[WP Evaluation. 28 Feb. Milton Keynes:](#) The Open University, Queen's University Belfast and NERUPI will be running a timely workshop on WP evaluation in February. Annette Hayton will be talking alongside Richard Shiner, Head of Evaluation at OfS, as well as Dr Liz Marr from the OU and Joanne Moore from the University of Exeter's Social Mobility Unit.

[Capabilities Approach 11 Mar. London:](#) Professor Monica McLean, University of Nottingham, is the keynote speaker at our next members' event in March. The event focusses on student success WP initiatives, looking at the Capabilities Approach and how this can be used to develop fairer and more inclusive pedagogies—curriculum, knowledge, teaching and learning.

[Geographies of WP. 5 Apr. London:](#) Members can find out more about the work of Dr Michael Donnelly, University of Bath, which sheds new light on the geographical limits to social mobility, through the lens of young people's university choices. This approach is particularly relevant to NCOP consortia and other partnerships working in specific localities. We will also hear from CFE Research, the lead team working on a 4-year impact evaluation of the National Collaborative Outreach Programme (NCOP).

Visit the website for all scheduled events and further information: [NERUPI Events](#).

Developing the NERUPI Network — What Next?



[the NERUPI Framework] is simple to navigate and demonstrate how our activities map across.

NCOP Higher York member

It was very useful to have time set aside to focus on [activity evaluation planning] and people around to ask questions of.

St George's, London member

Established just over a year ago, the NERUPI Network now has 33 member organisations from across England with plans to increase the membership in 2019-20. The Network was created to support members in developing expertise and capacity in evaluating WP interventions in a robust way. Underpinned by theory, research and insights from practice, the Framework provides the basis for exploring and adopting innovative and rigorous approaches to evaluation.

Our collaborative network has come a long way towards meeting these aims and is increasingly recognised as an exemplar of good practice in WP evaluation. The NERUPI Framework has been enthusiastically adopted by members with many using it as the basis for their WP evaluation plans. Members like its clear structure and how easy it is to use and explain to colleagues and students.

The Members' Events have also been well received, offering expert talks on WP topics as well as evaluation case study examples and time and space for members to talk to and learn from each other and develop evaluation activity for their own organisations.

We want now to push these developments further, providing more resources for members, more sharing of best practice and more opportunities for collaboration. Over the next few months we plan to set up new working groups around particular themes, expand the number of case studies and evaluation exemplars in the Members' Area of the website and encourage members to work together on collaborative research and evaluation projects and to publish innovative practice articles.

Much of this development will be kick-started at the first annual NERUPI Convention due to take place in London 2-3 July 2019. Make sure you are involved by booking your place here: [NERUPI Convention 2019](#).